





WELCOME

Celtek is a snowboard accessory company specializing in gloves, facemasks, and other winter accessories. Celtek was founded by professional snowboard brothers Erik & Bjorn Leines. Their goal is provide you with the most technical snowboard accessories on the market while keeping them fun and art inspired.

We pride ourselves on leading the charge in the snowboard accessory space by offering products that meet and exceed the customers expectations. Some of Celtek's latest developments include gloves that work with your touchscreen devices, the introduction of BOA into gloves and Outdry, the most waterproof/breathable insert on the market today.

See you on the mountain and thanks for all of your support!!

Erik Leines
Mule 

—ERIK AND BJORN LEINES

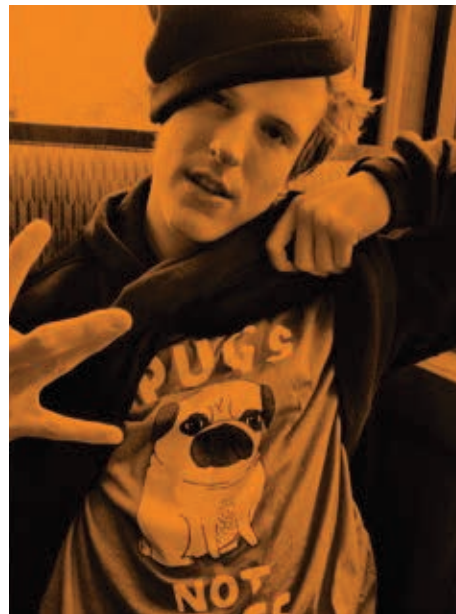
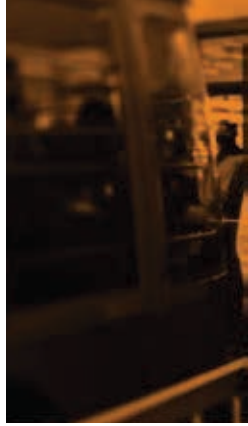




INDEX

- 05 Team
- 07 Sales Reps & Distributors
- 08 Wrist Protection Glove
- 09 Touchscreen Technology
- 10 OutDry Technology
- 11 Glove Technology
- 13 Merchandising
- 15 Connoisseur Collection
- 19 Clan Collection
- 25 Outbreak Collection
- 33 Core Collection
- 37 Wu-Tang Collaboration
- 49 Touchscreen Lifestyle Collection
- 55 Men's Facemasks
- 65 Men's Beanies
- 71 Youth Collection
- 73 Poy Cases







CELTEK TEAM 2015

BJORN LEINES
 GIGI RÜF
 DAN BRISSE
 BODE MERRILL
 CHRIS GRENIER
 AARON BIITNER
 ZAC MARBEN
 MIKEY LEBLANC
 CHERYL MAAS
 JJ THOMAS
 DEADLUNG
 CALE ZIMA
 JESS KIMURA
 MARC SWOBODA
 KOHEI KUDO

Johnny Lazzareschi
 Eric Willet
 Griffin Siebert
 Sam Taxwood
 Will Jackways
 Daniel Brown
 Ted Borland
 Brandon Hobush
 Brandon Reis
 Randy Van Nurden
 Cody Beiersdorf
 Brandon Hammid
 Ian Thorley
 Iris Lazzareschi
 Madison Blackley
 Toby Miller
 Red Gerard
 Sal Masekela
 Dave Doman
 Matt French

SALES REPS NORTH AMERICA

CENTRAL CANADA (AB, SK, MB)

Stefan Goulet
E // stefangoulet@mac.com
T // 403.460.2129

ONTARIO

Ian Nickson
E // ian@nicksonagencies.com
T // 705.792.0651

WESTERN CANADA (BC)

Jason Hilton
E // therideooffice@telus.net
T // 604.874.7763

EASTERN CANADA (QUEBEC)

Nick Dignard & Chris Vargas
EN // nick@brigadein.ca
EC // chris@brigadein.ca
TN // 418.952.6425
TC // 514.554.4078

NORTHWEST (ID, OR, WA, AK)

Jak Green
E // jak@olionorthwest.com
T // 503.551.5934

NORTHEAST (MA, RI, CT, VT, NH, ME)

Wayne Dills
E // waynekdills@gmail.com
T // 508.314.7797

NORCAL (NOR CAL, NO. NV)

Jim Linnberg
E // jlinnberg@hotmail.com
T // 503.577.1779

MID-ATLANTIC (PA, NY, NJ, DE, MD)

Chris Cooper & Adam Kiliszek
EC // coops@sprayinggravy.com
EA // adam@sprayinggravy.com
TC // 908.735.5136
TA // 570.807.6238

SO CAL (SO CAL, SO NV, AZ)

Ben Doran
E // ridewithben@yahoo.com
T // 760.822.0269

SOUTHEAST

Erik Leines
E // mule@celtek.com
T // 949.412.8861

INTERMOUNTAIN (UT, WYO, SO. ID)

Scott Smith
E // scootersmith_@hotmail.com
T // 801.558.0894

MIDWEST (BOTH SIDES OF THE LAKE)

Emmet Klocker
E // emmet@sheltersalesco.com
T // 320.229.2140

ROCKIES (CO, WY)

Scott Loeppert
E // scott.loepfert@salomon.com
T // 303.324.0312

CELTEK INTERNATIONAL

AUSTRALIA

Powder Day
Lisa Kovacs
E lisa@powderday.com.au
T +61.4.0409.2884

AUSTRIA

Good Question Supplies
Eric Bruweleit
E sales@goodquestion.de
T +49.6131.2500977

BENELUX

Revert
Jeroen Blankevoort
E office@revert.nl
T +31.23.3031012

CHILE

Beta Snow Distribution
Ariel Cifuentes
E ariel@betasnow.cl
T +569.6.6589253

CHINA

Another Distribution
Jeff Chang
E jungweichang@gmail.com
T +86.0769.8899.8620

FRANCE

Easy Maker
Sébastien Lépine
E sebastien.lepine@free.fr
T +33(0)6 99 42 22 65

GERMANY

Good Question Supplies
Eric Bruweleit
E sales@goodquestion.de
T +49.6131.2500977

ITALY

Wood Morning
Fabrizio Messineo
E sales@woodmorning.eu
T +39.06.4325192

JAPAN

Hasco
Shige Ebata
E s.ebata163@hasco.co.jp
T +81.6.4305.2111

KOREA

Empire Distribution
Jin Hae Jin
E nuguni77@naver.com
T +82.0.2.540.0044

NEW ZEALAND

Fresh Tech
Dale Stuthridge
E dale@skullcandy.co.nz
T +64.3.961.2880

NORWAY/SWEDEN

Response Distribution AS
Bjorn Tore Johannessen
E bjorn.tore@response.no
T +47.73.84.82.10

RUSSIA

Capital Distribution
Konstantin Mikhaylov
E opt@capitaldist.ru
T +7.495.664.29.55

UNITED KINGDOM

In the Shade
Owen Dallimore
E Owen@inthe-shade.com
T +44.0.1792.484901

CELTEK HQ
144 AVENIDA COTA
SAN CLEMENTE, CA 92672
P // 866.473.3331
F // 949.435.7455
E // mule@celtek.com



THE REVOLUTION IS HERE

Celtek is proud to introduce the future of wrist protection snow gloves at just the twist of a dial. Now you can custom fit your wrist protection by adjusting the BOA dial to the ideal setting that works best for you. We took our best selling Faded glove and working closely with Protec and BOA Technologies, we engineered it to give you ultimate protection. With the removable wrist splints and custom fit dial we are redefining the term "fits like a glove".





**INSTALINK
LEATHER** 

Celtek's top-tier touchscreen gloves feature Instalink capacitive leather. Instalink Leather gloves allow all ten fingers to work on any touch screen device, not limiting the wearer to what part of their hand or finger they can use on the device. Instalink leather also provides the wearer with more durability, waterproofing, and windproofing than standard fabric touchscreen gloves.



CONTACT 

Using special silver infused fabric, we are able to conduct your bodies natural electricity onto the screen of your touchscreen device. Our goal is to keep you warm and connected all year long.



OUTDRY

OutDry® is the ultimate in waterproofing technology. Traditional inserts are sewn into the glove at the fingertips leaving a gap between the outer shell and the insert where water can collect. Over time, this collection of water can cause your gloves to become heavy and lower their ability to keep you warm and dry.

The OutDry® waterproof / breathable membrane takes care of this problem. OutDry® is an insert that is directly bonded to the inside of the glove's outer shell making the outer layer of the glove and insert one layer. This makes any glove with OutDry® extremely waterproof, windproof, and virtually element proof. Rain, snow and wind are blocked at the glove's outer surface, keeping hands dry and warm, and allowing greater breathability and dexterity.

GLOVE TECHNOLOGY

HIPORA INSERT

A high waterproof / breathable 20K insert that will keep the water out while letting your hands breathe. This insert is perfect whether you are getting down on some handrails or doing a little side country hiking.



STORMDRY™ INSERT

Celtek's exclusive StormDry™ 15K/15K membrane acts as a protector to your hands against whatever mother nature has to offer. It prevents icy hands by locking out snow and wind, while still allowing your hands to breathe. Its like having a body guard from the snow.



HEAT SYSTEM

We did it once again. Now offering two heated glove models. One for the men and one for the ladies. This system runs a heat tape throughout the fingers. It is powered by two rechargeable lithium-ion batteries that charge off of a USB plug.



GLOVE WARMTH GUIDE

Need a quick guide to tell you how we rank the warmth of our different gloves? You can pick up a glove that is built for Antarctica's coldest days, a 10, or something that is great for some spring riding, a 6.



PRIMALOFT

When it comes to warmth, there is no better insulation technology out there. With Primaloft your hands are going to think that there is a mini fire inside your gloves keeping them nice and toasty.





4-SIDED FLOOR RACK

ITEM: 14POPFWAY

This is the perfect movable rack to display your Celtek order. With 4 sides of product catching your customers eye, they won't be able to ignore this magnificent presentation of product.

- Matte Black 4-Side Floor Rack
- Holds Approx. 288 Units
- 61" Tall X 24" Wide
- Includes 32 Pegs
- Wheels for Easy Movement

SKINNY DISPLAY

ITEM: 14POPTWAY

A matte black display with a new hanging system to showcase facemasks. Our new face mask packaging slides right on top of the beanie holders to make it super easy to shop. Mix and match facemasks, beanies and gloves on this display.

- 8 pegs & 20 Facemask / Beanie Holders
- Holds Approx. 92 Units
- 69" Tall X 15" Wide
- Additional Side Slat Wall Peg Inserts
- Option for Hand Sanitizer Bottle



ON-COUNTER DISPLAY

ITEM: 14POPONCT



A perfect addition to any counter to enhance the impulse decision to grab a pair of gloves before walking out the door.

- 4-Way Spinning On-Counter Display
- Holds Approx. 20 Touchscreen Gloves or 8 Snowboard Gloves
- 23" Tall X 13" Wide
- Holds Touchscreen & Snowboard Gloves
- Magnetic Graphics for Easy Brand Updating

CELTEK PEG

ITEM: 14POPSLAT / 14POPGRID / 14POPSADD



Mount it to your wall and feel the Celtek love instantly. A solid peg that comes in slat wall, grid, or speed rail.

- Offered in Grid, Slat, & Speed Rail
- Matte Black Slat Wall Peg
- 12" Long
- Fits Approx. 6 Snowboard Gloves or 12 Facemasks





CONNOISSEUR COLLECTION

TECHNOLOGY & LUXURY AT ITS FINEST



ILLUMINATE HEATED TOUCHSCREEN

ITEM: 15MGILL

SIZE: S-XL



BLACK

Celtek is proud to introduce the Mercedes-Benz of gloves. When you want the glove that has everything: touchscreen compatible palm, heat system, OutDry, & an over the cuff option. This is the definition of warm and technology in a glove.

- **Heating Unit:** 1-2 hour Heated Glove with Lithium-Ion USB Rechargeable Battery
- **Warmth Rating:** 12/10
- **Shell:** Water Repellent Genuine Goat Leather
- **Palm:** Instalink Touchscreen Compatible Leather Palm
- **Insert:** OutDry® Waterproof / Breathable Membrane
- **Insulation:** Primaloft
- **Inner Lining:** Fleece
- **Closure:** Wrist Cinch w/ Over Cuff Option



LIRA

ITEM: 15MGLIR

SIZE: S-XL



The ultimate waterproof insert technology, OutDry, meets a touchscreen compatible leather palm in this premium full leather glove. Heading to Alaska to go heli-boarding? Don't forget to bring the Lira with you.

- **Warmth Rating:** 10/10
- **Shell:** Water Repellent Genuine Goat Leather
- **Palm:** Instalink Touchscreen Compatible Leather Palm
- **Insert:** OutDry® Waterproof / Breathable Membrane
- **Insulation:** Primaloft
- **Inner Lining:** Sherpa / Fleece
- **Wrist Closure:** Waterproof Zipper / Velcro
- Wrist Leash



BLACK



SADDLE BROWN





CLAN COLLECTION

TEAM PROVEN EXCELLENCE



AVIATOR

ITEM: 15MGAVI

SIZE: S-XL



Team driven design meets cold weather functionality. The all leather Aviator with a soft and warm sherpa lining has been a team favorite for years to keep them dry on those blizzard days. Glove art inspired by pro snowboarders Zac Marben, Bjorn Leines, & Dan Brisse.

- **Warmth Rating:** 10/10
- **Shell:** Water Repellent Genuine Goat Leather
- **Palm:** Water Repellent Genuine Goat Leather
- **Insert:** HIPORA® 20K/20K Waterproof / Breathable Insert
- **Inner Lining:** Warm Sherpa Fleece
- **Insulation:** Primaloft
- **Wrist Closure:** Velcro
- Removable Wrist Leash



BJORN

BRISSE

MARBEN



RADAR

ITEM: 15MGRDR

SIZE: S-XL



Celtek's warmest & driest mitt features a Hipora waterproof insert, Primaloft Insulation & sherpa fleece lining. With its full leather shell and easy to get into velcro wrist closure, this mitten is a must have in your board bag on those cold days. Art inspired by pro snowboarders Bjorn Leines, Dan Brisse & Zac Marben.

- **Warmth Rating:** 10/10
- **Shell:** Water Repellent Genuine Goat Leather
- **Palm:** Water Repellent Genuine Goat Leather
- **Insert:** HIPORA® 20K/20K Waterproof / Breathable Insert
- **Inner Lining:** Warm Sherpa Fleece
- **Insulation:** Primaloft
- **Wrist Closure:** Velcro
- **Removable Wrist Leash**





TRIPPIN PRO

ITEM: 15MGTPP

SIZE: S-XL



OutDry, a Leather palm, finger separation and artwork from some of the biggest names in snowboarding, all in a trigger mitt. Warm, dry and bad ass. Why would you not get this trigger mitt? Art inspired by Bode Merrill, Cale Zima and our friends over at Change That Tape.

- **Warmth Rating:** 10/10
- **Shell:** Water Repellent Nylon
- **Palm:** Water Repellent Genuine Goat Leather
- **Insert:** OutDry® Waterproof / Breathable Membrane
- **Insulation:** SuperLoft
- **Inner Lining:** Bemberg Fleece
- **Wrist Closure:** Zipper
- **Wrist Leash**



BODE

ZIMA

CHANGE THAT TAPE



BLUNT

ITEM: 15MGBLN

SIZE: XS-XL



Keeping your hands warm and dry year round in this team inspired glove with the help of its Hipora insert, DWR treated nylon and Superloft insulation. Artwork inspired by team riders Gigi Rűf, Aaron Biittner and Chris Grenier.

- **Warmth Rating:** 9/10
- **Shell:** Water Repellent Oxford Nylon
- **Palm:** Grippy Synthetic Leather
- **Insert:** HIPORA® 20K/20K Waterproof / Breathable Insert
- **Insulation:** Superloft
- **Wrist Closure:** Velcro with Bang Out Cuff
- Removable Wrist Leash



GIGI



BIITTNER



GRENIER



PHILLY

ITEM: 15MGPHI

SIZE: XS-XL



This team inspired nylon mitt offers extreme protection and warmth from the elements with the help of its Hipora insert, DWR treated nylon and Superloft insulation. Artwork inspired by team riders Gigi Rűf, Aaron Biittner and Marc Swoboda.

- **Warmth Rating:** 9/10
- **Shell:** Water Repellent Oxford Nylon
- **Palm:** Grippy Synthetic Leather
- **Insert:** HIPORA® 20K/20K Waterproof / Breathable Insert
- **Insulation:** Superloft
- **Wrist Closure:** Velcro with Bang Out Cuff
- Removable Wrist Leash



GIGI



BIITTNER



SWOBODA



CELTEK



OUTBREAK COLLECTION

GLOVES ARE OUR CANVAS

FADED

ITEM: 15MGFAD

SIZE: XS-XL



Our best selling glove year over year. This year-round glove comes fully equipped with a 15K StormDry insert to handle whatever conditions mother nature decides to throw your way. Artwork by Dave Doman.

- **Warmth Rating:** 8/10
- **Shell:** Water Repellent Ripstop Nylon
- **Palm:** Debossed Waterproof PU
- **Insert:** StormDry™ 15K/15K Waterproof / Breathable Insert
- **Insulation:** SuperLoft
- **Wrist Closure:** Velcro
- Removable Wrist Leash



BLACK



GOLD FINGER



STONE GROVE



CHROMA

ITEM: 15MGCHR

SIZE: XS-XL



One of our most popular mitts. This mitten can bare all the elements while allowing you to zip open the palm to have complete access to your fingers. It's a different type of touchscreen mitten. Artwork by Dave Doman.

- **Warmth Rating:** 8/10
- **Shell:** Water Repellent Ripstop Nylon
- **Palm:** Debossed Waterproof PU
- **Insert:** StormDry™ 15K/15K Waterproof / Breathable Insert
- **Insulation:** SuperLoft
- **Wrist Closure:** Velcro
- Removable Wrist Leash
- WunderZip Palm Zipper Finger Access



BLACK



GOLD FINGER



STONE GROVE





FADED PROTEC WRIST GUARD

ITEM: 15MGFWG

SIZE: XS-XL



We took our best selling glove (Faded) and put wrist protection into it (two PRO-TEC wrist splints). This glove gives your wrists some relief on those brutal falls without looking like you are wearing one of those bulky wrist protection gloves. As well as looking good on the hill you will also be rocking the latest in wrist protection technology with the introduction of BOA into the snowboard glove market. The BOA system in this glove allows you to get a custom fit that works best for your wrist. Celtek is leading the charge down a new path for the way wrist protection gloves are designed by eliminating that annoying elastic velcro strap.

- **BOA:** Custom Wrist Fit
- **Warmth Rating:** 8/10
- **Shell:** Water Repellent Ripstop Nylon
- **Palm:** Debossed Waterproof PU
- **Insert:** StormDry™ 15K/15K Waterproof / Breathable Insert
- **Insulation:** SuperLoft
- **Wrist Closure:** BOA





BITTEN BY A MITTEN

ITEM: 15MGBIT

SIZE: XS-XXL



Ever have an argument over who gets to guinea pig a jump or who saw that girl in the lift line first? Well now you can let your gloves do the talking for you. Our best selling mitt, fully outfitted with a 15K StormDry insert, is a must have for everyone. Keep an eye on them though or you might get Bitten by a Mitten. They come in womens and youth too! Artwork by Matt French.

- **Warmth Rating:** 8/10
- **Shell:** Water Repellent Ripstop Nylon
- **Palm:** Debossed PU
- **Insert:** StormDry™ 15K/15K Waterproof / Breathable Insert
- **Insulation:** SuperLoft
- **Wrist Closure:** Slip On
- Removable Wrist Leash





TRIPPIN

ITEM: 15MGTRI

SIZE: XS-XXL



Lobster Claw, Trigger Mitt, Camel Glove, however you want to say it, this is the "in" glove right now. This glove has everything: finger separators, 15K StormDry waterproof insert, glove-feel dexterity, and amazing artwork. You definitely want this mitt in your snow gear arsenal. Featuring artwork from Matt French.

- **Warmth Rating:** 8/10
- **Shell:** Water Repellent Poly Oxford Nylon
- **Palm:** Debossed PU
- **Insert:** StormDry™ 15K/15K Waterproof / Breathable Insert
- **Insulation:** SuperLoft
- **Wrist Closure:** Velcro
- Removable Wrist Leash



BLACK



THUG LIFE



HYPER VIPER



X-RAY



TIEDYE FLY



TRIPPIN PIPE

ITEM: 15MGTRP

SIZE: XS-XL



Three years in the line now the Trippin Pipe has revolutionized the way people wear pipe gloves. As one of the team favorites you can see the likes of Gigi Rüf and Bode Merrill rocking this glove on the hill. Hitting it hard with three banger colorways you are going to have one tough decision to make. Featuring artwork from Matt French and Dave Doman.

- **Warmth Rating:** 6/10
- **Shell:** Water Repellent Treated Ripstop Nylon
- **Insert:** None
- **Insulation:** None
- **Palm:** Water Repellent PU / Micro Suede
- **Wrist Closure:** Velcro



SPACED OUT



THUG LIFE



HYPER VIPER

U TUBE MITTEN

ITEM: 15MGUTM

SIZE: XS-XL



WARMTH

The U Tube Mitten is a full neoprene pipe mitt designed to hold the heat in while giving you the dexterity of a normal pipe glove. This mitten is perfect for those days when you need more warmth than a pipe glove, but without the bulk of your winter glove. Featuring artwork from Matt French and Dave Doman.

- **Warmth Rating:** 7/10
- **Shell:** Water Repellent Treated Neoprene
- **Insert:** None
- **Insulation:** None
- **Palm:** Debossed PU
- **Wrist Closure:** Slip On



X-RAY



TIEDYE FLY



STONEY GROVE



MISTY

ITEM: 15MGMIS

SIZE: XS-XL



WARMTH

The Misty has been protecting hands on those spring days for sometime now. With it's silicone palm and unlimited dexterity this is the glove you want when you are riding, but it's warm enough to be at the beach. Featuring artwork from Dave Doman.

- **Warmth Rating:** 6/10
- **Shell:** Water Repellent Treated Ripstop Nylon
- **Palm:** Microsuede with Silicone Print
- **Insert:** None
- **Insulation:** None
- **Wrist Closure:** Slip On



BLACK



FAIR ISLE



THUG LIFE



SPACED OUT







LIFT LINE COLLECTION

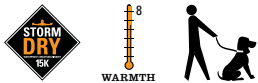
BUILT FOR THE WEEKEND WARRIOR



GUNNAR

ITEM: 15MGUN

SIZE: XS-XXL



The redesigned Gunnar still offers the same great waterproof protection as the old model just with a cleaner aesthetic. With the 15K StormDry insert and its over jacket cuff gator you are bound to stay dry and warm longer, keeping you riding when your friends are in the lodge getting hot chocolate.

- **Warmth Rating:** 8/10
- **Shell:** Water Repellent Treated Ripstop Nylon
- **Palm:** Debossed PU
- **Insert:** StormDry™ 15K/15K Waterproof / Breathable Insert
- **Insulation:** SuperLoft
- **Wrist Closure:** Wrist Cinch & Over Cuff Gauntlet Gator
- Removable Wrist Leash



BLACK

ORANGE

RASTA
GRAFFITI

GRANITE

ACE

ITEM: 15MGACE

SIZE: XS-XL



A lot of glove for a little price. 15K StormDry insert, insulation, DWR coating, and a goggle squeegee for how much? How many can I get? This is the glove you want to have on your hands when you want a lot of glove that isn't going to break your piggy bank.

- **Warmth Rating:** 8/10
- **Shell:** Water Repellent Tasion Nylon
- **Palm:** Debossed Waterproof PU
- **Insert:** StormDry™ 15K/15K Waterproof / Breathable Insert
- **Insulation:** SuperLoft
- **Wrist Closure:** Velcro
- Removable Wrist Leash



BLACK



ORANGE



RASTA
GRAFFITI



GRANITE

VERTICAL

ITEM: 15MGVRT

SIZE: XS-XL



One of our team's favorite mitts. You can see CELTEK team riders Ted Borland, Sam Taxwood, and Griffin Siebert killing it at the cold Utah mountains in this mitt. When you want a lot of mitt and have some money left to put towards your lift ticket grab the Vertical.

- **Warmth Rating:** 8/10
- **Shell:** Water Repellent Tasion Nylon
- **Palm:** Debossed Waterproof PU
- **Insert:** StormDry™ 15K/15K Waterproof / Breathable Insert
- **Insulation:** SuperLoft
- **Wrist Closure:** Slip On w/ Gauntlet Cinch
- Removable Wrist Leash



BLACK



ORANGE



RASTA
GRAFFITI



GRANITE





WU-TANG CLAN COLLECTION

THIS AIN'T NOTHIN' TO FU*K WIT



LIRA

ITEM: 15MGLIR

SIZE: S-XL



WU-TANG

The ultimate waterproof insert technology, OutDry, meets a full touchscreen compatible leather palm in this premium full leather glove. Heading to Alaska to go heli-boarding? Don't forget to bring the Lira with you. Now you have a black and yellow premium option.

- **Warmth Rating:** 10/10
- **Shell:** Water Repellent Genuine Goat Leather
- **Palm:** Instalink Touchscreen Compatible Leather Palm
- **Insert:** OutDry® Waterproof / Breathable Membrane
- **Insulation:** Primaloft
- **Inner Lining:** Warm Sherpa Fleece
- **Wrist Closure:** Waterproof Zipper / Velcro
- Wrist Leash



TRIPPIN

ITEM: 15MGTRI

SIZE: XS-XXL



Lobster Claw, Trigger Mitt, Camel Glove, however you want to say it, this is the "in" glove right now. This glove has everything: finger separators, 15K StormDry waterproof insert and glove-feel dexterity. Show your love for the W and get this trigger mitt.

- **Warmth Rating:** 8/10
- **Shell:** Water Repellent Treated Poly Oxford Nylon
- **Palm:** Debossed PU
- **Insert:** StormDry™ 15K/15K Waterproof / Breathable Insert
- **Insulation:** SuperLoft
- **Wrist Closure:** Velcro
- Removable Wrist Leash



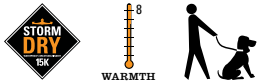
WU-TANG



BITTEN BY A MITTEN

ITEM: 15MGBIT

SIZE: XS-XXL



Our best selling mitt, fully outfitted with a 15K StormDry insert, is a must have for everyone. This glove has finger separators and will keep your hands happy and dry whether you are throwing methods or W's. Killa Bee artwork from Matt French.

- **Warmth Rating:** 8/10
- **Shell:** DWR Treated Ripstop Nylon
- **Palm:** Debossed PU
- **Insert:** StormDry™ 15K/15K Waterproof / Breathable Insert
- **Insulation:** SuperLoft
- **Wrist Closure:** Slip On
- Removable Wrist Leash



WU-TANG
KILLA BEE

WU-TANG
STRIPE



FADED

ITEM: 15MGFAD

SIZE: XS-XL



Our best selling glove year over year. This year-round glove comes fully equipped with a 15K StormDry insert to handle whatever conditions mother nature decides to throw your way. Now available in army green with the flag WU patch.

- **Warmth Rating:** 8/10
- **Shell:** Water Repellent Treated Ripstop Nylon
- **Palm:** Debossed Waterproof PU
- **Insert:** StormDry™ 15K/15K Waterproof / Breathable Insert
- **Insulation:** SuperLoft
- **Wrist Closure:** Velcro
- Removable Wrist Leash



WU-TANG



MISTY

ITEM: 15MGMS

SIZE: XS-XXL



Cross your hands over and throw up the ultimate W with this unique WU piece. The Misty has been protecting hands on those spring days for sometime now. With it's silicone palm and unlimited dexterity this is the glove you want when you are riding, but it's warm enough to be at the beach.

- **Warmth Rating:** 6/10
- **Shell:** DWR Treated Ripstop Nylon
- **Palm:** Microsuede with Silicone Print
- **Insert:** None
- **Insulation:** None
- **Wrist Closure:** Slip On



WU-TANG



CONTACT TOUCHSCREEN

ITEM: 15TSCON

SIZE: XS-XL



The weather doesn't care if you need to answer a call, send a text or reply to that important email. This is where the contact comes in handy. You can work your mobile device without exposing your hands to the cold that awaits. Stay warm, connected and be able to "Contact" who you want. As if the moisture wicking poly fleece and touch fabric weren't enough, we have added a silicone grip to the palm to give you a secure grip on your device.

- **Warmth Rating:** 5/10
- **Shell:** 4-Way Stretch Moisture Wicking Polyester Fleece
- **Palm:** 4-Way Poly Fleece with non-slip silicon and Silver Touchscreen Fabric
- **Wrist Closure:** Slip On



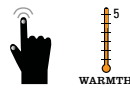
WU-TANG



CIRCUIT TOUCHSCREEN

ITEM: 15TSCIR

SIZE: S/M & L/XL



Connect to your phone with this ten fingered touchscreen compatible glove. The whole glove is woven out of a silver infused yarn. Keep those hands nice and toasty so that you can text that girl you met last night in the bar back. You already have cold feet about your date, who says that you need to have cold hands too?

- **Warmth Rating:** 5/10
- **Shell:** Silver Infused Acrylic Knit
- **Wrist Closure:** Slip On



WU-TANG



SAMURAI

ITEM: 15MFSAM



A team favorite, whether riding a resort, snowmobiling in the backcountry or riding during the summer at hood this is the perfect piece to protect your face. This is a must have for your facemask stash.....thin, lightweight, and breathable. Now available in this B.A. black and yellow WU brick pattern.

- **Warmth Rating:** 7/10
- **Fabric:** Breathable Single Layer Poly Spandex
- **Face Mask Style:** Pullover Balaclava
- UV Protection
- Great Under a Helmet

ONE SIZE



WU-TANG



MELTDOWN

ITEM: 15MFMTD

ONE SIZE



Tired of fleece tubes not being long enough? So are we. Introducing the Meltdown...A soft comfortable fleece tube that actually covers all of your neck and it won't pull out of your jacket. Now you can rock the ultimate WU pride while staying warm.

- **Warmth Rating:** 9/10
- **Fabric:** Polyester Fleece
- **Face Mask Style:** Full Coverage Tube
- UV Protection
- Great Under Helmets



WU-TANG



PAYSON

ITEM: 15MFPAY

ONE SIZE



This army green WU facemask is lightweight, breathable and moisture wicking that you will be stoked to be found lurking around your mountain in. Rock this one when you want to protect your face from the elements but show your love for the clan.

- **Warmth Rating:** 6/10
- **Fabric:** Single Layer Polyester Spandex
- **Face Mask Style:** Full Coverage Tube
- UV Protection
- Great Under Helmets



WU-TANG



SCRIBBLE

ITEM: 15MFSCR

ONE SIZE



WU-TANG

The Scribble has been our best selling facemask for sometime now. With its unique to Celtek bungee back design (Bungee Fit) and warm fleece lining this is one facemask you are going to be happy to have when the weather turns on you. Drop in on this mask to show that you are nothing to be F'd with.

- **Warmth Rating:** 7/10
- **Fabric:** Mesh with Fleece Backing
- **Face Mask Style:** Bungee Fit
- UV Protection
- Great Under Helmets



ALTITUDE

ITEM: 15MFALT

ONE SIZE

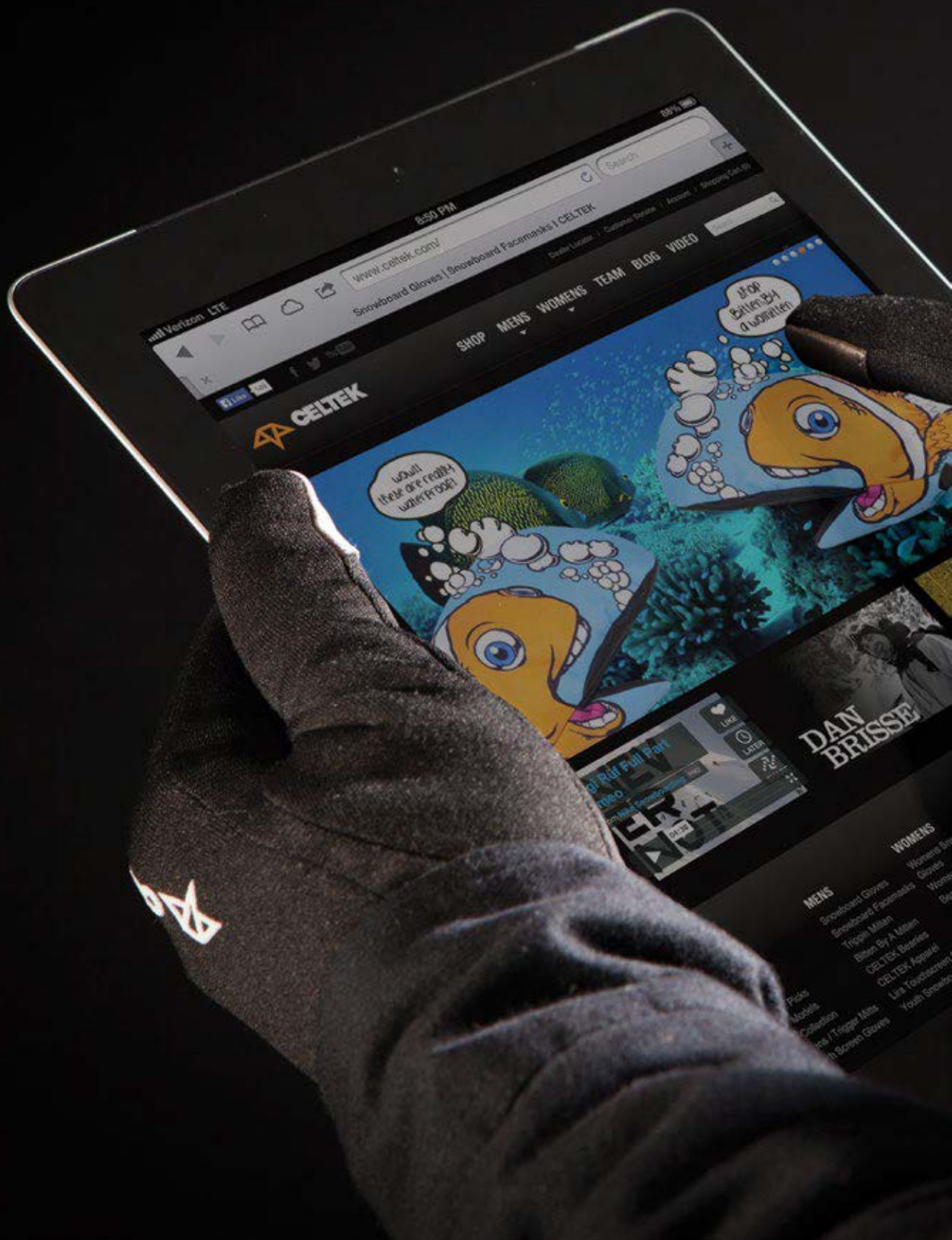


Classics never die! When you just want a bandana but don't want one of those cheap cotton ones that get soaked after the first run. This Poly spandex bandana stretches, breathes easy and dries fast. What more can you ask for from a bandana? You like to rock it old school? Grab this unique WU bandana with two different logo options.

- **Warmth Rating:** 6/10
- **Fabric:** Polyester Spandex
- **Face Mask Style:** Stretch Bandana
- UV Protection
- Great Under Helmets



WU-TANG



Verizon LTE
8:59 PM
89%

www.celtek.com
Snowboard Gloves | Snowboard Facemasks | CELTEK
Search
Account | Shopping Cart

SHOP MENS WOMENS TEAM BLOG VIDEO

CELTEK

What these are really waterproof!

Stop Bitten By a waterflier

DAN BRISSE

MENS

- Snowboard Gloves
- Snowboard Facemasks
- Tripper Mitts
- Ribbon By A Million
- CELTEK Accessories
- CELTEK Apparel
- Luna Touchscreen
- Youth Snowboard

WOMENS

- Women's
- Gloves
- Women's
- Boots

CELTEK



TEAM
Board
Facemasks
Goggles
Apparel
Hats
Gloves
and
Cloves

CENTER
About
Technology
Site Chat
Touch My Color
Contact
Press
Color Guide
Work Place
Warranty

DEALERS
Districts
International
Log In

TOUCHSCREEN LIFESTYLE COLLECTION

KEEPING YOU WARM AND CONNECTED



DRIVER TOUCHSCREEN

ITEM: 15TSDRI

SIZE: XS-XL



A manly full leather driver glove with a palm that works with every touchscreen device. Besides chicken wings, beef jerky, and riverboat gambling trips, what else can you ask for? This glove is the perfect solution whether you are taking your lady out for a fancy evening or hitting the road on your Harley.

- **Warmth Rating:** 10/10
- **Shell:** Water Repellent Genuine Leather
- **Palm:** Instalink Touchscreen Compatible Leather
- **Wrist Closure:** Slip On



BLACK



DRIFTER TOUCHSCREEN

ITEM: 15TSDFT

SIZE: XS-XL



Warm performance fleece combined with Water-Resistant softshell makes the perfect lifestyle glove to keep you warm on those questionable weather days. With its Instalink touchscreen compatible leather palm you will be able to connect with your family without losing a finger.....or five, taking off your gloves.

- **Warmth Rating:** 9/10
- **Shell:** Water Resistant Soft Shell / Warm Performance Polyester Fleece
- **Palm:** Instalink Touchscreen Compatible Leather
- **Wrist Closure:** Slip On



BLACK

RUBLE TOUCHSCREEN

ITEM: 15TSRBL

SIZE: XS-XL



The Ruble's full Instalink leather palm works with all touchscreen devices. All ten fingers can type or swipe on your screen. This special leather is engineered to withstand time and will not lose its Touch Screen functionality with wear. Keep yourself warm and linked to your device without being exposed to Jack Frost.

- **Warmth Rating:** 8/10
- **Shell:** 4-Way Stretch Water/Wind Resistant Poly Fleece
- **Palm:** Instalink Touchscreen Compatible Leather / Weather Resistant Leather
- **Wrist Closure:** Slip On



BLACK

TAN

STONEY GROVE

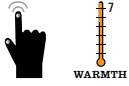
GREY STRIPE



CONTACT TOUCHSCREEN

ITEM: 15TSCON

SIZE: XS-XL



The weather doesn't care if you need to answer a call, send a text or reply to that important e-mail. This is where the contact comes in handy. You can work your mobile device without exposing your hands to the cold that awaits. Stay warm, connected and be able to "Contact" who you want. As if the moisture wicking poly fleece and touch fabric weren't enough, we have added a silicone grip to the palm to give you a secure grip on your device.

- **Warmth Rating:** 7/10
- **Shell:** 4-Way Stretch Moisture Wicking Polyester Fleece
- **Palm:** 4-Way Poly Fleece with non-slip silicon and Silver Touchscreen Fabric
- **Wrist Closure:** Slip On



BLACK

GOLD

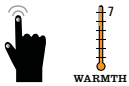
SKULLITON



TRIGGER TOUCHSCREEN

ITEM: 15TSTRI

SIZE: XS-XL



Celtek is always trying to come up with new fun ways to wear your gloves. Now we are introducing a touchscreen trigger mitt lifestyle glove. Take your style from the mountain and put it into your everyday lifestyle. This trigger mitt has touchscreen conductive fabric on the index finger and thumb allowing you to use your phone without taking your hand protection off. Slip into these and instantly see what the hype is all about.

- **Warmth Rating:** 7/10
- **Shell:** 4-Way Stretch Moisture Wicking Polyester Fleece
- **Palm:** 4-Way Poly Fleece with non-slip silicon and Silver Touchscreen Fabric
- **Wrist Closure:** Slip On



KILLER WHALE
DUDE





POSTMAN TOUCHSCREEN

ITEM: 15TSPST

SIZE: XS-XL



This glove is called the postman for a reason. It always delivers. It is not like your other touchscreen gloves that only work half the time. Get this silver infused finger tipped glove and stay connected and warm all winter long.

- **Warmth Rating:** 7/10
- **Shell:** Moisture Wicking Polyester Fleece
- **Palm:** Moisture Wicking Polyester Fleece with Silver Fabric
- **Wrist Closure:** Slip On



BLACK



CIRCUIT TOUCHSCREEN

ITEM: 15TSCIR

SIZE: S/M & L/XL



Connect to your phone with this ten fingered touchscreen compatible glove. The whole glove is woven out of a silver infused yarn. Keep those hands nice and toasty so that you can text that girl you met last night in the bar back. You already have cold feet about your date, who says that you need to have cold hands too?

- **Warmth Rating:** 6/10
- **Material:** Silver Infused Acrylic Knit
- **Wrist Closure:** Slip On



BLACK

RASTA

DAY OF THE
DEAD

FACEMASK TECHNOLOGY

CELTEK FACEMASK STYLES



BALACLAVA



CLAN FIT



FULL COVERAGE TUBE



BUNGEE FIT



MERINO WOOL

Merino wool comes from Merino sheep who live in some of the harshest climates. Their wool has natural moisture wicking properties to draw sweat away from the skin while regulating body temperature without overheating the wearer. Merino Wool is also one of the softest types of wool that you can find. In a nut shell this is one of the best cold weather fabrics you can have.



DESIGNED FOR THE COLDEST CONDITIONS

If the facemask has this symbol, it means that it was designed to help protect you from mother natures worst. It will keep you warm and dry longer allowing you to be on the slopes longer.



UV PROTECTION

All of our facemasks provide you with UV protection. Leave the leather to our gloves and not your face. Protect it by throwing on one of our comfortable, sun damage prevention facemasks.



WARMTH RATING

Know what kind of weather you are going to be riding in? Look at our warmth rating to get an idea of how warm of a face mask you want to rock out there. Ten is Antarctica in the middle of winter and a five is Bear Mountain on a warm spring day.



MESH BREATHE HOLE

Don't you hate it when you can't breathe in your facemask? Well we put a mesh breathe hole to help prevent goggle fog and to help you breathe a little better. We heard that being able to breathe is important.



WORKS GREAT UNDER HELMETS

Helmets are becoming such a common sight on the mountain these days. We wanted to make it easy to shop for your face mask by telling you which one works great underneath your helmet.



MENS FACEMASKS

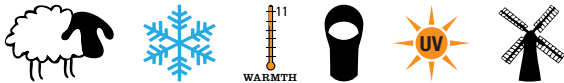
HOW FACE PROTECTION SHOULD BE MADE



SHADOW

ITEM: 15MFSHW

ONE SIZE



The Shadow, made of Merino Wool, is built for the extreme colds that winter has to offer. Just ask any of our Merino Sheep friends during the harsh winters in New Zealand. Merino Wool is breathable in warmer temperatures and extremely insulating in winter. This Balaclava will keep you riding longer while your friends are complaining of being cold. They should get a Shadow too.

- **Warmth Rating:** 11/10
- **Fabric:** Merino Wool
- **Face Mask Style:** Pullover Balaclava
- UV Protection
- Rated for the Coldest of Conditions



BLACK

GRANITE



SAMURAI

ITEM: 15MFSAM

ONE SIZE



A team favorite, whether riding a resort, snowmobiling in the backcountry or riding during the summer at Mt. Hood, this is the perfect piece to protect your face. This is a must have for your facemask stash.....thin, lightweight, and breathable.

- Warmth Rating: 7/10
- Fabric: Breathable Single Layer Poly Spandex
- Face Mask Style: Pullover Balaclava
- UV Protection
- Great Under a Helmet



CREEPING TOM

ITEM: 15MFCM

ONE SIZE



This is the perfect mask and beanie combo to keep you warm on and off the hill. You can wear the mask down when you need to hide your face and tuck it away when you want to show the world your grill. Celtek is not responsible for what you do off the hill with this mask. Be a creep and get the Creeping Tom.

- Warmth Rating: 8/10
- Fabric: Acrylic & Brushed Polyester
- Face Mask Style: Pullover Balaclava / Roll Up Beanie
- UV Protection





WOLVERINE

ITEM: 15MFWLV

ONE SIZE



The Wolverine is just what you need on those cold winter days when you need that added protection to the lower half of your face. This mask comes fully equipped with a wider back area for more neck protection and the all new clan fit, a new molded face protection that keeps you warm and dry in the harshest of conditions, while allowing you to breathe normally.

- **Warmth Rating:** 10/10
- **Fabric:** Brushed Poly Spandex with Water Repellent Clan Fit Molded Facemask
- **Face Mask Style:** Velcro Facemask with Clan Fit
- UV Protection
- Rated for the Coldest of Conditions
- Great Under Helmet



BLACK



TIEDYE FLY



BELLA COOLA

ITEM: 15MFBLC

ONE SIZE



If you were wondering, the answer is yes, we went there. Celtek is offering the Clan Fit molded facemask in a balaclava. This mask is a must have by jumpers, jibbers, pipe riders, slednecks, and pretty much anyone who knows what good for them. Even your grandma is going to want to be seen rocking one of these to bingo night.

- **Warmth Rating:** 10/10
- **Fabric:** Brushed Poly Spandex with Water Repellent Clan Fit Molded Facemask
- **Style:** Pullover Balaclava with Clan Fit
- UV Protection
- Rated for the Coldest of Conditions
- Great Under Helmet



BLACK

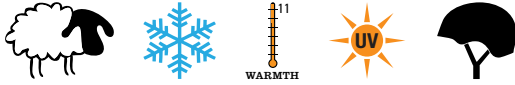


RASTA
GRAFFITI

EVEREST

ITEM: 15MFEVE

ONE SIZE



It's a Merino Wool tube.....do we need to say more? This is a must have on any day. Merino Wool keeps you warm on the coldest days and breathes like no other fabric on those warm ones. Its the perfect tube and it comes in two colors so....grab them both.

- **Warmth Rating:** 11/10
- **Fabric:** Merino Wool
- **Face Mask Style:** Full Coverage Tube
- UV Protection
- Rated for the Coldest of Conditions
- Great Under Helmets



BLACK

GRANITE



MELTDOWN

ITEM: 15MFMTD

ONE SIZE



Tired of short fleece tubes pulling out of your coat? So are we. Introducing the Meltdown, a soft comfortable fleece tube that actually covers all of your neck and won't pull out of your jacket. Grab a couple of these reasonably priced gems.

- **Warmth Rating:** 9/10
- **Fabric:** Polyester Fleece
- **Face Mask Style:** Full Coverage Tube
- UV Protection
- Great Under Helmets



BLACK

STONE GROVE

NAVY

RASTA



LIME

COLORADO

'MERICA

SPACED OUT





HANGOVER

ITEM: 15MFHGR

ONE SIZE



Back again, the Hangover brings to the mountain a great fitting two layer tube made with an incredibly soft brushed polyester fabric. This thing is so soft and comfortable that we are worried you will not take it off.

- Warmth Rating: 8/10
- Fabric: Two Layer Ultra Soft Brushed Polyester
- Face Mask Style: Full Coverage Tube
- UV Protection
- Great Under Helmets



THUG LIFE



GOLD



FAIR ISLE



CHANGE THAT TAPE



PAYSON

ITEM: 15MFPAY

ONE SIZE



This mask is a team favorite. The Payson is back again with a whole new arsenal of colors. With its, lightweight, breathable, moisture wicking material you will be stoked to be found lurking around your mountain in this tube. Artwork from Dave Doman and Matt French. You can never have too many of this tube.

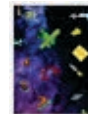
- Warmth Rating: 6/10
- Fabric: Single Layer Polyester Spandex with UV Protection
- Face Mask Style: Full Coverage Tube
- Great Under Helmets



BLACK



STONE GROVE



SPACED OUT



X-RAY



CELEPHANT



TIEDYE FLY

POWDER PANTY

ITEM: 15MFPPY

ONE SIZE



Want to get faceshots and stay warm and dry? This unique to CELTEK face-mask design is the perfect combination of protection and comfort, the same thing you look for in a good pair of underwear. The waterproof shell and mesh breathe hole make this mask a favorite among Celtek team riders Bjorn Leines and Dan Brisse.

- **Warmth Rating:** 10/10
- **Fabric:** Waterproof Nylon with Fleece Backing
- **Face Mask Style:** Bungee Fit with Mesh Breathe Area
- UV Protection
- Rated for the Coldest of Conditions



GIGI

BRISSE

BIITNER



OUTLAW

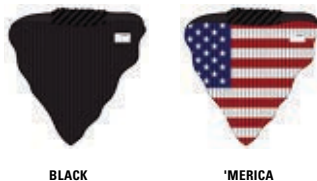
ITEM: 15MFOUT

ONE SIZE



For those moments when you want to impress the ladies and a normal facemask just wont make you look flosy enough. Throw on the knitted outlaw and you will be the talk of the mountain.

- **Warmth Rating:** 8/10
- **Fabric:** Acrylic Knit with Soft Mesh Backing
- **Face Mask Style:** Bungee Fit
- UV Protection
- Great Under Helmets



BLACK

'MERICA





HEIST

ITEM: 15MFHEI

ONE SIZE



The Heist uses a premium ultra soft polyester fabric which feels like a cloud on your face. It is lightweight, breathable, and soft. Get this mask on, catch air and you won't even know its there. Along with making great face masks we are good at rhyming.

- **Warmth Rating:** 7/10
- **Fabric:** Ultra Soft Brushed Polyester
- **Face Mask Style:** Bungee Fit
- UV Protection
- Great Under Helmets



RASTA
GRAFFITI



GOLD



THUG LIFE



SCRIBBLE

ITEM: 15MFSCR

ONE SIZE



The Scribble has been our best selling facemask for sometime now. With its unique to Celtek bungee back design (Bungee Fit), mesh front for easy breathability and warm fleece lining this is one facemask you are going to be happy to have when the weather turns on you.

- **Warmth Rating:** 7/10
- **Fabric:** Mesh with Fleece Backing
- **Face Mask Style:** Bungee Fit
- UV Protection
- Great Under Helmets



BLACK



TIEDYE FLY



STONEY GROVE



SPACED OUT



X-RAY



ALTITUDE

ITEM: 15MFALT

ONE SIZE



Classics never die! When you just want a bandana, but don't want one of those cheap cotton ones that get soaked after the first run, that's why you need to have the Altitude. This Poly spandex bandana stretches, breathes easy and dries fast. What more can you ask for from a bandana?

- **Warmth Rating:** 6/10
- **Fabric:** Polyester Spandex
- **Face Mask Style:** Stretch Bandana
- UV Protection
- Great Under Helmets



BLACK



THUG LIFE



TIEDYE FLY



MENS BEANIES

PREMIUM WEAR FOR YOUR HEAD

MULE BEANIE

ITEM: 15MBMUL

ONE SIZE

We basically took the popular Clan beanie and stitched it down in the back making this new addition to the line a must have. This beanie is sure to get some attention on the mountain this year while keeping your head nice and warm.

- Fabric: Acrylic
- Beanie Style: Back Stitched Down
- Leather Clip Label



BLACK



BURNT ORANGE



BLACK STRIPE



NRT BEANIE

ITEM: 15MBNRT

ONE SIZE

Our best selling beanie last season is back with some new colors. A great soft hand feel and with the back stitched down there is no reason to ever have to adjust your beanie sag. Ladies will love it, it's the AXE body spray of beanies.

- Fabric: Fine Acrylic
- Beanie Style: Back Stitched Down
- Leather Patch



BLACK



STORM



CHECKERS



OCEAN BLUE



BJORN



CHANGE THAT TAPE



BIITTNER



BLACK STRIPE





CLAN BEANIE

ITEM: 15MBCLA

ONE SIZE

The Clan beanie is a classic gas station style beanie that you can wear rolled up or unfolded. This Beanie is a team favorite and can be found in four banger colorways.

- Fabric: Acrylic
- Beanie Style: Roll Up
- Jacquarded Clip Label



BLACK HEATHER



GOLD



'MERICA



GREEN HEATHER



PATCHED UP BEANIE

ITEM: 15MBPTU

ONE SIZE

Headwear can be a little boring sometimes. We wanted to spice up your kit so we are introducing the Patched Up Beanie. This head piece gives you the fit of your favorite gas station beanie with a premium feel and a little bit of flavor.

- Fabric: Acrylic
- Beanie Style: Regular Premium
- Applique Patch



BLACK



'MERICA



BEAR GRILLS



STONEY GROVE



RASTA



ALOHA

ALCATRAZ BEANIE

ITEM: 15MBALC

ONE SIZE

Yeah Brah.....Want a beanie that fits a little oversized? Well here it is...The Alcatraz. With the slightly oversized fit and big prison stripes you will fit in at any reggae concert or drunk tank that you happen to visit during the winter.

- Fabric: Acrylic
- Beanie Style: Slightly Oversized
- Jacquarded Clip Label



RED STRIPE



RASTA



COLORADO



HELMET BEANIE

ITEM: 15MBHEL

ONE SIZE

Remember when you wondered what beanie you can wear under your helmet? Now you don't have to wonder anymore. The Helmet beanie is the perfect thickness and feel to wear underneath any helmet. With it's moisture wicking fabric this beanie will keep you warmer and dryer longer while not bunching up.

- Fabric: Soft Polyester Spandex
- Beanie Style: Under Helmet
- Jacquarded Clip Label
- Moisture Wicking



BLACK



STONE GROVE



X-RAY



RASTA
GRAFFITI





EASEL BEANIE

ITEM: 15MBEAS

ONE SIZE

What....two beanies in one? That's right its reversible. With a large jacquarded logo on one side and a clean embroidery on the other, what's not to love about this beanie when you want to fly the celtek flag.

- **Fabric:** Fine Acrylic
- **Beanie Style:** Reversible
- Logo Embroidery



LOGO POM BEANIE

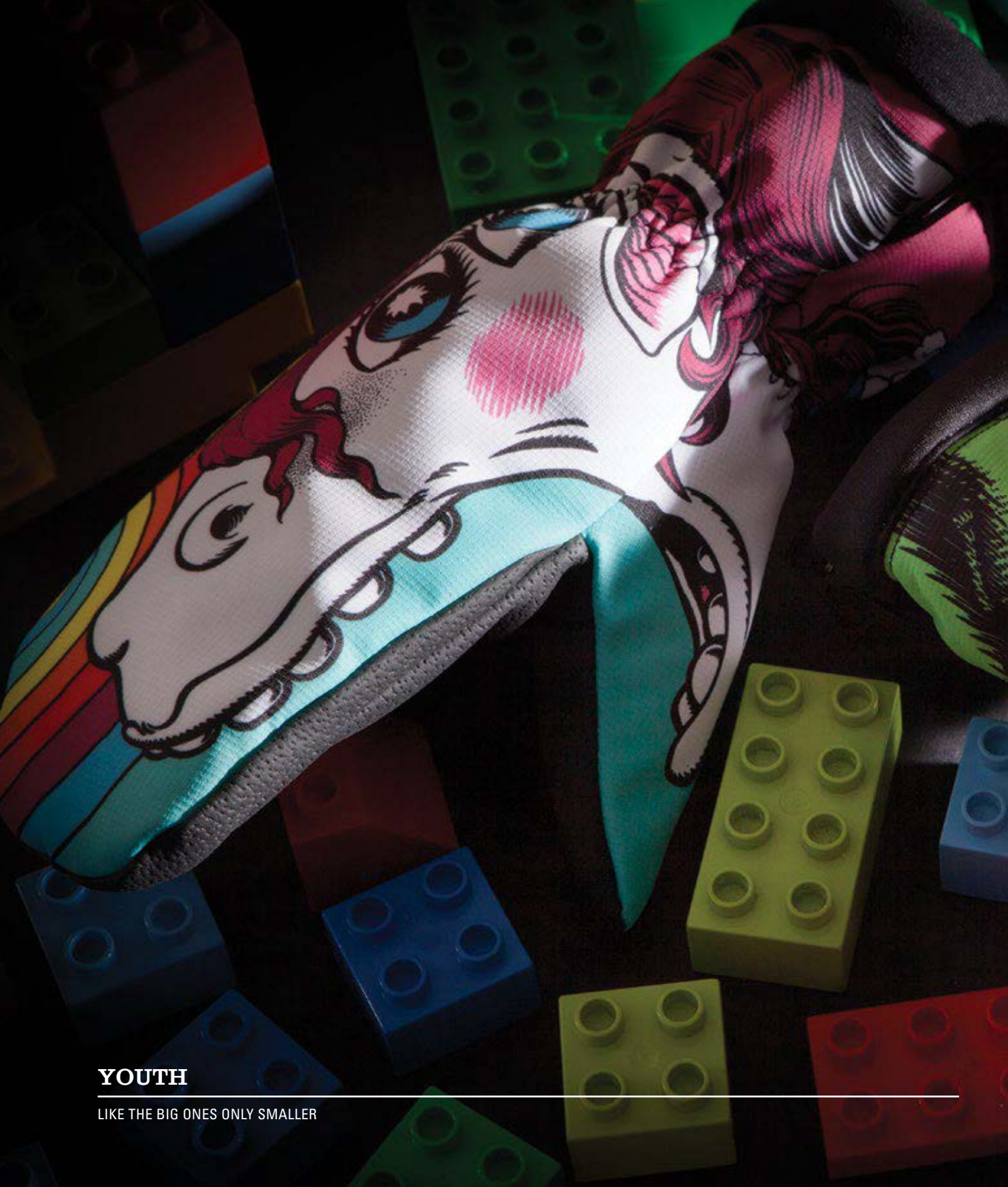
ITEM: 15MBLOG

ONE SIZE

A great fitting beanie with a heavy knit that will keep you warm on those cold days. The logo beanie is a comfortable jacquarded roll up beanie with a multi-colored pom. Fly the Clan flag loud and proud.

- **Fabric:** Heavy Knit Acrylic
- **Beanie Style:** Roll Up with Pom





YOUTH

LIKE THE BIG ONES ONLY SMALLER



BITTEN BY A LIL MITTEN

ITEM: 15YGBIT

SIZE: S/M & L/XL



The groms can't help but to want all five colors of these fun hand puppets. Mix and match them and have a conversation with a Gator and the Weirdicorn at the same time. Watch out though....they bite....You don't want your youngster to get Bitten by a Lil Mitten.

- **Warmth Rating:** 10/10
- **Shell:** Water Repellent Treated Ripstop Nylon
- **Palm:** Debossed Waterproof PU
- **Insert:** StormDry™ 15K/15K Waterproof / Breathable Insert
- **Insulation:** SuperLoft
- **Wrist Closure:** Slip On
- **Removable Wrist Leash**



HOLLYWOOD



GATOR



'MERICA



WEIRDICORN



CLOWN FISH





POV CASE COLLECTION

KEEPING YOUR CAMERA GEAR ORGANIZED IN STYLE



ON THE GO POV CAMERA CASE

ITEM: 15CA0TG

This is a must have for all POV camera owners. This case is designed to take a beating so that your cameras don't have to. This hard-shell case is built with three pockets in the lid that you can tuck your cords and accessories into. In the main body of the case you have a pocket for your camera, remote, SD card, battery and a wide open pocket for any other accessories you wish to keep organized with your camera. This case was designed to fit into your backpack or clip on to the back of it with the carabiner attached to the handle.

- **Case Shell Fabric:** Molded Hard Shell Case
- **Case Inside Fabric:** Water Resistant Nylon
- **Case Type:** Med Case with Waterproof Zipper
- **Dimensions:** 6.88" Deep x 9.05" Wide x 3" Tall

ONE SIZE



BLACK



FLANNEL



RASTA TIEDYE



DAY TRIPPIN POV CAMERA CASE

ITEM: 15CADTR

ONE SIZE

If you just need a case that is compact that you can throw in any bag, the Day Trippin POV case is what you need to keep your camera looking new. This case has three pouches to put your cords and accessories and enough room for two POV cameras. Its kind of like having a compact car with a really big trunk.

- **Case Shell Fabric:** Mixed Fabric With PU Base for Durability
- **Case Inside Fabric:** Water Resistant Nylon
- **Case Type:** Small Case with Waterproof Zipper
- **Dimensions:** 5.5" Deep x 7.48" Wide x 2.5" Tall



BLACK



SLATE



SKULLITON



 **CELTEK**
WOMENS 2015



INDEX

- Women's Heated Gloves 03
 - Women's Gloves 07
 - Women's Facemasks 17
 - Women's Beanies 25
 - Glove Overview 33
-





WOMENS HEATED GLOVES

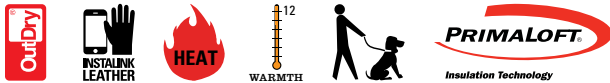
COLD HANDS ARE A THING OF THE PAST



LUXE HEATED TOUCHSCREEN GLOVE

ITEM: 15WGLXG

SIZE: XS-L



Wearing the Luxe Heated Glove is like sitting next to a fireplace wrapped in an Alpaca blanket while sipping on hot cocoa with mini marshmallows. You are warm and comfortable! When you combine a three setting heating system that keeps your hands toasty, touchscreen device usability, and the best waterproof technology available (OutDry), you can't help but to be in your happy place.

- **Heating Unit:** 1-2 hour Heated Glove with Lithium-Ion USB Rechargeable Battery
- **Warmth Rating:** 12/10
- **Shell:** Water Repellent Genuine Goat Leather
- **Palm:** Instalink Touchscreen Compatible Leather Palm
- **Insert:** OutDry® Waterproof / Breathable Membrane
- **Insulation:** PrimaLoft
- **Inner Lining:** Fleece
- **Closure:** Wrist Cinch w/ Over Cuff Option



BLACK



LUXE HEATED TOUCHSCREEN MITTEN

ITEM: 15WGLXM

SIZE: XS-L



A beautiful quilted leather mitten with a heating unit, a palm that allows you to answer phone calls, metal accents and OutDry (the leader in waterproof technology). This is the ultimate answer when your hands never seem to stay warm all day long. When old Jack Frost starts to wave at you in the lift line, press the heat button on the back of your glove to activate the built in heat system. With three heat settings, how can you not own this mitten?

- **Heating Unit:** 1-2 hour Heated Glove with Lithium-Ion USB Rechargeable Battery
- **Warmth Rating:** 12/10
- **Shell:** Water Repellent Genuine Goat Leather
- **Palm:** Instalink Touchscreen Compatible Leather Palm
- **Insert:** OutDry® Waterproof / Breathable Membrane
- **Insulation:** PrimaLoft
- **Inner Lining:** Fleece
- **Closure:** Wrist Cinch w/ Over Cuff Option



BLACK





WOMENS GLOVE COLLECTION

FASHION FINALLY MEETS FUNCTION



CALYPSO

ITEM: 15WGCAL

SIZE: XS-XL



The Calypso is a really cute textured leather mitten combined with a 20K waterproof insert, a soft acrylic cuff, and a really warm sherpa fleece lining. This is the perfect to accent your outfit. Looking stylish "AND" keeping your hands warm/dry is an option with the Celtek Calypso.

- **Warmth Rating:** 10/10
- **Shell:** Water-Repellent Genuine Goat Leather
- **Palm:** Water-Repellent Genuine Goat Leather
- **Insert:** HIPORA® 20K/20K Waterproof / Breathable Insert
- **Insulation:** Primaloft
- **Inner Lining:** Fleece
- **Wrist Closure:** Fo-Style Button / Velcro
- **Wrist Leash**



BLACK



CHESTNUT



STELLA

ITEM: 15WGSTL

SIZE: XS-XL



The Stella glove is a longtime favorite for women. With its slightly longer cuff you can wear this glove over or under your jacket sleeve. This glove comes with removable touchscreen liners, a nose wipe on the thumb and a goggle squeegee. Stellas nickname is "hand oven", need we say more?

- **Warmth Rating:** 9/10
- **Shell:** Water Repellent Gabardine Nylon
- **Palm:** Waterproof Synthetic Leather PU
- **Insert:** StormDry™ 15K/15K Waterproof / Breathable Insert
- **Inner Lining:** Fleece w/ Removable Touchscreen Compatible Fleece Liner Glove
- **Insulation:** Superloft
- **Wrist Closure:** Slip On w/ Wrist Cinch



GOLD RUSH



GALAXY



MESA
SUNRISE



SLATE

VERA

ITEM: 15WGVRA

SIZE: XS-XL



What happens when you combine a beautiful warm women's mitt, with a removable touchscreen compatible liner, and a great waterproof insert? You end up purchasing the perfect mitt for the cold handed. Grab the Vera mitt and stay warm all winter long.

- **Warmth Rating:** 9/10
- **Shell:** Water Repellent Gabardine Nylon
- **Palm:** Waterproof Synthetic Leather PU
- **Insert:** StormDry™ 15K/15K Waterproof / Breathable Insert
- **Inner Lining:** Fleece w/ Removable Touchscreen Compatible Fleece Liner Glove
- **Insulation:** Superloft
- **Wrist Closure:** Slip On w/ Wrist Cinch



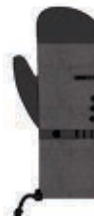
GOLD RUSH



GALAXY



MESA
SUNRISE



SLATE

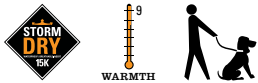




BITTEN BY A WOMITTEN

ITEM: 15WGBIT

SIZE: XS-XL



I bet you love going to the zoo and seeing all of the cute animals. Why not start a zoo of your own? The Bitten by a Womitten has all the animals you will ever need. With fish, bunnies, leopards, cupcakes and dolphins you'll need to have the whole set. This way you can mix and match your gloves. Now your gloves serve two purposes, keeping you warm and hand puppets.

- **Warmth Rating:** 9/10
- **Shell:** Water Repellent Ripstop Nylon
- **Palm:** Waterproof Polyurethane Rubber
- **Insert:** StormDry™ 15K/15K Waterproof / Breathable Insert
- **Insulation:** SuperLoft
- **Wrist Closure:** Slip On w/ Elastic Wrist Gator
- Removable Wrist Leash



CLOWN FISH

BUNNY

SNOW LEOPARD

RAINBOW CUPCAKE

FLIP 'ER



HELLO OPERATOR

ITEM: 15WGHEL

SIZE: XS-XL



Do you ever want the warmth of a mitt with the dexterity and feel of a glove? Well here it is....a trigger mitt for the ladies. It has all the benefits and features as the men's, but with a women's touch. The acrylic cuff and a soft fleece lining is enough reason to buy this glove.....mitt....errr....trigger mitt. This is the perfect accessory for any outfit.

- **Warmth Rating:** 9/10
- **Shell:** Water Repellent Taslon & Ripstop Nylon
- **Palm:** Waterproof Synthetic Leather PU
- **Insert:** StormDry™ 15K/15K Waterproof / Breathable Insert
- **Insulation:** Primaloft
- **Wrist Closure:** Metal Zipper
- Removable Wrist Leash



BLACK SEQUIN



DESERT SAND



LEOPARD



DREAM CATCHER



GALAXY



NEPTUNE

ITEM: 15WGNEP

SIZE: XS-XL



Don't like bulky gloves? Need a glove that has a lower profile and will be that something to put your outfit over the edge? The Neptune is for the ladies who want a glove that still has the warmth of some of those bulkier gloves, but with a slimmer profile. With super loft insulation, a StormDry 15 waterproof insert, detailed accents and it's adorable look, this glove is a must have for all the ladies.

- **Warmth Rating:** 7/10
- **Shell:** Water Repellent Ripstop Nylon
- **Palm:** Waterproof Polyurethane Rubber
- **Insert:** StormDry™ 15K/15K Waterproof / Breathable Insert
- **Insulation:** SuperLoft
- **Wrist Closure:** Velcro Strap
- Removable Wrist Leash



BLACK SEQUIN



DESERT SAND



DREAM CATCHER



KIMURA



MAYA MITTEN

ITEM: 15WGMYA

SIZE: XS-XL



The Maya is a mitten with fun artwork, cute button detailing on one hand and leather cross stitching on the other. We wanted to offer you ladies a warm, waterproof mitten that isn't boring. Why should you have to settle for something that is not this fun and warm?

- **Warmth Rating:** 8/10
- **Shell:** Water Repellent Taslon & Ripstop Nylon
- **Palm:** Waterproof Polyurethane Rubber
- **Insert:** StormDry™ 15K/15K Waterproof / Breathable Insert
- **Insulation:** Superloft
- **Wrist Closure:** Velcro Strap
- Removable Wrist Leash



SPIRIT FINGERS

ITEM: 15WGSPPF

ONE SIZE



Do you ever have a mitten on and get the urge to do spirit fingers? From time to time we all do. Well we have the perfect solution...A knitted mitten that you can fold the front half back when you want to pop out your fingers and show off that newly manicured hand of yours. Oh and its great for using your touchscreen phone, tablet or iPod as well.

- **Warmth Rating:** 5/10
- **Shell:** Knitted Acrylic
- **Palm:** Knitted Acrylic
- **Wrist Closure:** Slip On



LEOPARD





PRECIOUS TOUCHSCREEN

ITEM: 15TSPRE

SIZE: XS-XL



You are going to want to keep this precious accessory close to you. You never know when the air will all of a sudden turn frigid and your hands will start to turn to a nice shade of purple. Everyone knows how you ladies get cold so easily. The Precious is the perfect solution to stay warm, stay connected and stay purple-free.

- **Warmth Rating:** 7/10
- **Shell:** 4-way Stretch Moisture Wicking Polyester Fleece
- **Palm:** 4-way Poly Fleece with Silver Touchscreen Fabric
- **Wrist Closure:** Slip On



BLACK



CHERISH TOUCHSCREEN

ITEM: 15TSCHR

SIZE: S/M & L/XL



You know those days when you just need to text someone back, answer an email, or change a song, but its so cold outside that you just want to keep your hands in your pockets? Now you can finally take them out of your pockets and slip on a pair of the warm Cherish Touchscreen gloves. All 10 fingers work with any touchscreen device so you can stay connected and toasty.



BLACK

ANCHORED

POLKA DOT

MIDNIGHT SHINE

- **Warmth Rating:** 6/10
- **Shell:** Silver Infused Acrylic Knit
- **Insert:** None
- **Insulation:** None
- **Wrist Closure:** Slip On





WOMENS FACEMASKS

PROTECT WHAT MAKE UP WON'T



CHARITY

ITEM: 15WFCHR



Hey Ladies, do you need a fashionable hood that you can wear on the hill to protect you from the elements, but also wear out on the town? We know that the last thing you want to do after a full day of riding is spend a long time on your hair. Now you can go straight from the hill to the bar still looking like hot fire without any hair worry. Your hair secret is safe with us.

- **Warmth Rating:** 9/10
- **Fabric:** Acrylic Knit
- **Face Mask Style:** Make Up Friendly Soft Knitted Hood
- UV Protection

ONE SIZE



BLACK



HEART BREAKER

ITEM: 15WFHTB



A cute infinity scarf with a twist...get it? This scarf will keep you looking your best on and off the mountain while keeping your neck nice and toasty. How many different ways can you wear this scarf?

- **Warmth Rating:** 9/10
- **Fabric:** Acrylic Knit
- **Face Mask Style:** Make Up Friendly Infinity Scarf
- UV Protection
- Great Under Helmets

ONE SIZE



BLACK

MIDNIGHT
SHINE



GYPSY

ITEM: 15WFGYP

ONE SIZE



The Gypsy is where style meets function. Who says you have to have one or the other? This stylish pullover knitted neckwarmer has a super soft brushed polyester layer that you can pull up over your nose and mouth as a facemask when you need added protection from the elements or tuck it away when you don't. This super cute scarf is one you can wear anywhere from a chilly outing in the city to a blizzard day in the mountains.

- **Warmth Rating:** 9/10
- **Fabric:** Acrylic Knit Neck Warmer with a Built in Soft Brushed Poly Face Mask
- **Face Mask Style:** Make Up Friendly Pullover Neckwarmer
- UV Protection
- Great Under Helmets



BLACK



SERENITY

ITEM: 15WFSER

ONE SIZE



The Serenity is a pullover tube for the ladies that is knitted out of an incredibly soft acrylic yarn. There is no way to describe to you how soft and comfortable this actually is.....you'll have to feel it for yourself. Once you get your hand on this tube you are going to never let go.

- **Warmth Rating:** 9/10
- **Fabric:** Super Soft Acrylic Knit
- **Face Mask Style:** Make Up Friendly Pull Over Tube
- UV Protection



DESERT SAND



LEOPARD



GEO LIME



GOLD RUSH



HADLEY

ITEM: 15WFHAD

ONE SIZE



The Hadley is a fun, warm, moisture wicking tube that has a really soft feel against your skin. With its slim profile, this mask fits into the pocket of your outerwear so you have it when you need it. Keep the hadley on you at all times.

- **Warmth Rating:** 8/10
- **Fabric:** Moisture Wicking Super Soft Brushed Poly
- **Face Mask Style:** Make Up Friendly Pull Over Tube
- UV Protection
- Great Under Helmets



DREAM CATCHER



KIMURA



GALAXY



5505

ITEM: 15WF550

ONE SIZE



Bunnies, pillows, blankets....these are just a few things you thought were soft until you felt the incredibly cozy 5505[®]. Because you are going to be so warm and cozy in this pullover style tube, we named it after the surface temperature of the sun. We are so clever. And yes its ok to curl up and sleep in this neck warmer.

- **Warmth Rating:** 10/10
- **Fabric:** Incredibly Soft Poly Fleece
- **Face Mask Style:** Pull Over Neck Warmer
- UV Protection
- Great Under Helmets



BLACK



CORAL



EMERALD



PLUMB



OBSESSION

ITEM: 15WFOBS

ONE SIZE



The Obsession was named after the feeling that you ladies get when they feel this fabric. This incredibly soft moisture wicking fabric has a great hand feel and is extremely breathable. Who says that facemasks need to be boring and uncomfortable. We are changing the way people feel about face protection.

- Warmth Rating: 8/10
- Fabric: Super Soft Acrylic Knit
- Face Mask Style: Make Up Friendly Bungee Fit
- UV Protection



LEOPARD



DREAM CATCHER



DIAMOND

ITEM: 15WFDIA

ONE SIZE



This mask is like a classic movie, a spa day, or a food that you love....it never gets old. The Diamond is a classic in our line and a must have. The Diamond has a mesh front for easier breatheability and fleece in the back for added warmth. With multiple colors to choose from, the question is how many of these do I get?

- Warmth Rating: 9/10
- Fabric: Mesh with Fleece Backing
- Face Mask Style: Make Up Friendly Bungee Fit
- UV Protection
- Great Under Helmets



GALAXY



MESA SUNRISE



CUDDLES



SPRINKLES





WOMENS BEANIES

FOR THOSE DAYS WHEN YOUR HAIR JUST WON'T COOPERATE

ZEN POM

ITEM: 15WBZEN

ONE SIZE

We had so many compliments on the black lurex colorway that we added two new colors with a bit of something that will make you sparkle on and off the mountain. With lurex yarn woven into the knit you can know have a little subtle fun with your headwear.

- **Fabric:** Knitted Acrylic W/ Lurex
- **Beanie Style:** Slightly Slouchy Rollup with Pom
- Jacquarded Clip Label



SALMON SHIMMER



SKY SPARKLE



MIDNIGHT SHINE



SIENNA

ITEM: 15WBSIE

ONE SIZE

The Sienna is a classy cable knit beanie that can be worn rolled up or slouchy. Have a fancy dinner party that you dont have time to do your hair for? No problem, grab the Sienna beanie and run out the door. The beanie will do the rest.

- **Fabric:** Knitted Acrylic
- **Beanie Style:** Roll Up or Slouchy with Pom
- Leather Clip Label



LATTE



CORAL



SNOW FALL



KELLY GREEN





CHATEAU

ITEM: 15WBCHA

New to Celtek this year the Chateau is a super cute beret style beanie with a flattering slouch. This is a super cozy beanie without being too warm. Besides looking amazing in this hat, you will feel like you are sitting in a warm chateau on your winter vacation in this beanie. You know, that "I am happy," kind of feeling.

- **Fabric:** Fine Acrylic Knit
- **Beanie Style:** Regular Fit
- Jacquarded Clip Label

ONE SIZE



BLACK

LATTE



PIN-UP

ITEM: 15WBPIN

The pin-up is a fun & cute acrylic knitted beanie. With Three great colors you will have to decide which one of these you are going to pin to your pintrest wall. Once again Celtek is taking the boring out a category.

- **Fabric:** Knitted Acrylic
- **Beanie Style:** Regular Fit
- **Leather Patch**

ONE SIZE



DREAM CATCHER



MESA SUNRISE



LEOPARD



PASO

ITEM: 15WBPAS

ONE SIZE

Wow this beanie is amazing! At least this is what we keep hearing. The Paso is an incredibly soft and comfortable beanie with a standard fit. Did we mention it's reversible too.

- **Fabric:** Super Soft Acrylic
- **Beanie Style:** Reversible
- Leather Clip Label



BLACK

FINE WINE



DAISY

ITEM: 15WBDAI

ONE SIZE

The Daisy is a thicker roll up beanie that will keep you warm on the coldest of days. You are sure to be seen in this beanie with your choice of these two fun, pop colors.

- **Fabric:** Acrylic
- **Beanie Style:** Roll Up
- Jacquarded Clip Label



CARIBBEAN SEA

ELECTRIC PINK



KASKADE

ITEM: 15WBKAS

The Kaskade beanie can be worn rolled up or rolled down for a slouchy look. With its fun bright colors you are bound to be the talk of the mountain. This beanie is great on a brisk day in the city or one of those horrible weather days at a resort.

- **Fabric:** Fine Acrylic
- **Beanie Style:** Roll Up or Slouchy
- **Leather Clip Label**

ONE SIZE





SEASONS

ITEM: 15WBSEA

ONE SIZE

New to the line this year is the seasons beanie. It is an acrylic regular fit beanie with a soft band on the inside for added warmth around your ears. The beanie is also sewn down in the back to prevent it from riding up on your head and giving you an unwanted cone head look. This is a beanie you will want to have in your collection.

- **Fabric:** Knitted Acrylic
- **Beanie Style:** Slightly Oversized Pom
- Jacquarded Clip Label



BLACK



CARIBBEAN SEA



VIOLET



CORAL



PATCHES

ITEM: 15WBPAT

ONE SIZE

The Patches beanie is a thinner beanie that you can wear at anytime of the year. It is made with an incredibly soft acrylic knit which has an incredible hand feel to it. In addition to the amazing feel of the beanie you a fun, cute patch with a furry critter.

- **Fabric:** Super Fine Acrylic
- **Beanie Style:** Roll Up
- Jacquarded Clip Label



MITTENS
THE KITTEN



HAPPY PANDA



TIMBER TIGER



LITTLE BUDDY

ILLUMINATE



BLACK

LIRA



BLACK



SADDLE BROWN



WU-TANG

AVIATOR



BJORN



BRISSE



MARBEN

RADAR



BJORN



BRISSE



MARBEN



STONP

TRIPPIN PRO



BODE



ZIMA



CHANGE THAT TAPE

BLUNT



GIGI



BIITTNER



GRENIER

PHILLY



GIGI



BIITTNER



SWOBODA

FADED



BLACK



GOLD FINGER



STONE GROVE



WU-TANG

CHROMA



BLACK



GOLD FINGER



STONE GROVE

FADED PROTEC WRIST GUARD



BLACK



X-RAY

BITTEN BY A MITTEN



HOLLYWOOD



'MERICA



GATOR



KING OF THE JUNGLE



ALIEN



WU-TANG KILLA BEE



WU-TANG STRIPE

TRIPPIN



BLACK



THUG LIFE



HYPER VIPER



X-RAY



TIEDYE FLY



WU-TANG

TRIPPIN PIPE



SPACED OUT



THUG LIFE



HYPER VIPER

U TUBE



X-RAY



TIEDYE FLY



STONE GROVE

MISTY



BLACK



FAIR ISLE



THUG LIFE



SPACED OUT

GUNNAR



BLACK



ORANGE



RASTA GRAFFITI



GRANITE

ACE



BLACK



ORANGE



RASTA GRAFFITI



GRANITE

VERTICAL



BLACK



ORANGE



RASTA GRAFFITI



GRANITE

DRIVER



BLACK

DRIFTER



BLACK

RUBLE



BLACK



TAN



STONE GROVE



GREY STRIPE

CONTACT



BLACK



GOLD



SKULLITON



WU-TANG

TRIGGER TOUCHSCREEN



KILLER WHALE DUDE



BLACK



RASTA



DAY OF THE DEAD



WU-TANG

CIRCUIT

YOUTH - BITTEN BY A LIL MITTEN



HOLLYWOOD



GATOR



'MERICA



WEIRDICORN



CLOWN FISH

ON THE GO POV CAMERA CASE



BLACK



FLANNEL



RASTA TIEDYE

DAY TRIPPIN POV CAMERA CASE



BLACK



SLATE



SKULLITON

SHADOW



BLACK GRANITE

CREEPING TOM



STONEY GROVE

SAMURAI



BLACK RASTA GRAFFITI 'MERICA SPACED OUT WU-TANG

WOLVERINE



BLACK TIEDYE FLY

EVEREST



BLACK GRANITE

BELLA COOLA



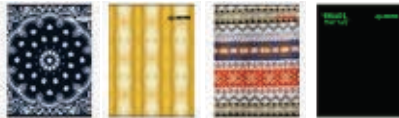
BLACK RASTA GRAFFITI

MELTDOWN



BLACK STONEY GROVE NAVY RASTA LIME COLORADO 'MERICA SPACED OUT WU-TANG

HANGOVER



THUG LIFE GOLD FAIR ISLE CHANGE THAT TAPE

PAYSON



BLACK STONEY GROVE SPACED OUT X-RAY CELEPHANT TIEDYE FLY WU-TANG

POWDER PANTY



GIGI BRISSE BIITNER

OUTLAW



BLACK 'MERICA

HEIST



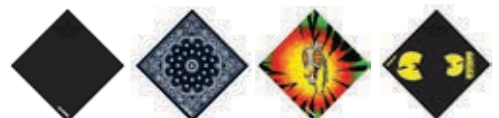
RASTA GRAFFITI GOLD THUG LIFE

SCRIBBLE



BLACK TIEDYE FLY STONEY GROVE SPACED OUT X-RAY WU-TANG

ALTITUDE



BLACK THUG LIFE TIEDYE FLY WU-TANG

MULE



'MERICA BURNT ORANGE BLACK STRIPE

NRT



BLACK STORM CHECKERS OCEAN BLUE BJORN CHANGE THAT TAPE BIITTNER BLACK STRIPE

CLAN



BLACK HEATHER GOLD 'MERICA GREEN HEATHER

PATCHED UP



BLACK 'MERICA BEAR GRILLS STONEY GROVE RASTA ALOHA

ALCATRAZ



RED STRIPE RASTA COLORADO

HELMET



BLACK STONEY GROVE X-RAY RASTA GRAFFITI

EASEL



KILLER WHALE DUDE SLATE POP DAY OF THE DEAD RED SKY ALOHA RASTA GRAFFITI

LOGO POM



BLACK LOGO ORANGE CHAOS HAPPY HOUR

LUXE HEATED GLOVE



BLACK

LUXE HEATED MITTEN



BLACK

CALYPSO



BLACK

CHESTNUT

STELLA



GOLD RUSH



GALAXY



MESA
SUNRISE



SLATE

VERA



GOLD RUSH



GALAXY



MESA
SUNRISE



SLATE

BITTEN BY A WOMMITTEN



CLOWN
FISH



BUNNY



SNOW
LEOPARD



RAINBOW
CUPCAKE



FLIP 'ER

HELLO OPERATOR



BLACK
SEQUIN



DESERT
SAND



LEOPARD



DREAM
CATCHER



GALAXY

NEPTUNE



BLACK
SEQUIN



DESERT
SAND



DREAM
CATCHER



KIMURA

MAYA



CUDDLES



DREAM
CATCHER



MEOW
MAAS



GEO LIME

SPIRIT FINGERS



LEOPARD

PRECIOUS TOUCHSCREEN



BLACK

CHERISH TOUCHSCREEN



BLACK



ANCHORED



POLKA DOT



MIDNIGHT SHINE



CHARITY



BLACK

HEARTBREAKER



BLACK

MIDNIGHT SHINE

GYPSY



BLACK

SERENITY



DESERT SAND



LEOPARD



GEO LIME



GOLD RUSH

HADLEY



DREAMCATCHER



KIMURA



GALAXY

5505°



BLACK



CORAL



EMERALD



PLUMB

OBSESSION



LEOPARD



DREAM CATCHER

DIAMOND



GALAXY



MESA SUNRISE



CUDDLES



SPRINKLES

ZEN POM



SALMON SHIMMER



SKY SPARKLE



MIDNIGHT SHINE

SIENNA



LATTE



CORAL



SNOW FALL



KELLY GREEN

CHATEAU



BLACK



LATTE

PIN-UP



DREAM CATCHER



MESA SUNRISE



LEOPARD

PASO



BLACK



FINE WINE



CARIBBEAN SEA



ELECTRIC PINK

KASKADE



ARCTIC ICE



CORAL



EMERALD

SEASONS



BLACK



CARIBBEAN SEA



VIOLET



CORAL

PATCHES



MITTENS THE KITTEN



HAPPY PANDA



TIMBER TIGER



LITTLE BUDDY

DESIGN & ART DIRECTION

Aaron Hennings & Steven Woolworth

CATALOG DESIGN & DIRECTION

Steven Woolworth

FEATURED ARTISTS

Dave Doman, Matt French

PHOTOGRAPHY

Product - John Beutler Photography

Action - Andy Wright, Vernon Deck

© 2014 Celtek All rights reserved. No part of this publication may be reproduced without the written permission of the publisher or the copyright owner.

